



Collaborative Aotearoa NEWSLETTER

Nov 2021

Kia Ora Koutou

We are thinking of our colleagues in lockdown and we are sending aroha.. kia kaha! These are such uncertain times. We are continuing to support our network during this time and we will prioritise the needs of whānau and community.

To ensure we remain responsive, both in terms of covid but also the health reforms we have made some changes to our Collaborative. The Health Care Home Collaborative (the Collaborative) governance group have provided clear guidance on the future of the Collaborative to ensure that the organization is ready to respond to the upcoming 2022 health reforms. It was also recognized that our effective collaborative model and infrastructure could be extended into Localities enablement and Digital health areas.

The Collaborative will invest in supporting locality development, as well as ensure HCH and Digital Health remain at the core of the Collaborative. This has led to a name change to **Collaborative Aotearoa** as this reflects our broader mahi. Collective Impact is an approach we are advocating for in terms of support for localities mahi - but a tailored approach that reflects Aotearoa.

Our whakataukī

Hapaitia te aratika
Pumau ai te rangatiratanga
mo ngā uri whakatipu

*Foster the pathway of knowledge
to strength
Independence and growth for
future generations*

Our tīma



Amarjit Maxwell
Tumū Whakarae



Jess White
Kaiwhakahaere kaitohu



Kanita Nikora
Kaiwhakahaere kaitohu



Jo Henson
Kaiarataki Panonitanga



Kirsten Kyle
Kaiwhakahaere Kaupapa

SAVE THE DATE



Monday 29th November
Virtual Summit



REGISTER

Missed a webinar - visit our YouTube page
[Health Care Home Collaborative - YouTube](#)

Recent webinars include

- Tackling & Avoiding Burnout
- Bias in Healthcare
- Digital Health at Scale & Pace
- Telehealth Learning's and Experiences

From Health Care Home to Collaborative Aotearoa

The Collaborative Governance group recently held a strategic planning session to continue its discussions, on how to further add value to its member network and the wider sector. It is worth reiterating that honouring Te Tiriti o Waitangi is our priority as well as ensuring equity for Māori and other priority groups. There is also a strong commitment to incorporating the voice of the consumer, those with lived experience.

Our values underpin everything we do with Te Tiriti o Waitangi and equity for Māori is front and centre.

Poipoia

Having empathy and nurturing the provision of quality care for whānau

Manaakitanga

Acknowledging the mana of each party in order to create an environment of respect for different perspectives and behaviours

Whakapono

Acknowledges the need for trust in doing the right things to ensure high quality systems and quality care

Kaitiakitanga

Acknowledges a duty of care as a custodian that has the best interests of the patient/whānau and staff at heart

Pūkengatanga

There is an expected level of expertise by those delivering care and an obligation to do the best for patients and whānau

Öritetanga

All whānau experience the same excellent health and wellbeing outcomes regardless of situation and challenges

Tino Rangatiratanga

Respecting the self-governance of each party and their control over their own destiny

The Governance Group's vision is to extend the current Health Care Home Collaborative infrastructure to progress key enablers of health reform and delivery of related models of care, so that others can benefit from the HCH effective knowledge sharing, and collaborative action.

Given the health reforms and support required for the wider primary and community sector, the Governance group recommends:

- a broader focus with a reset as Collaborative Aotearoa (interim name to be confirmed at our upcoming Council meeting in November)
- increased capability and capacity to the programme team of 2.50 FTE (achieved through prudent financial management of carry forward funding to support health reforms)
- continuation as an important vehicle and voice for change and implementation for the Health Care Home model of care and Digital health, and extended to related key system enablers for example localities / rohe development / ; and
- the Health Care Home model remains our core mahi with tools and resources open sourced for the benefit of our network to support efficient general practice teams.

The Collaborative infrastructure allows for change at scale and pace across our network and supports effective peer learning. We are a catalyst for change and implementation.

We have the opportunity to share this successful approach to support other models of care and related system enablers.

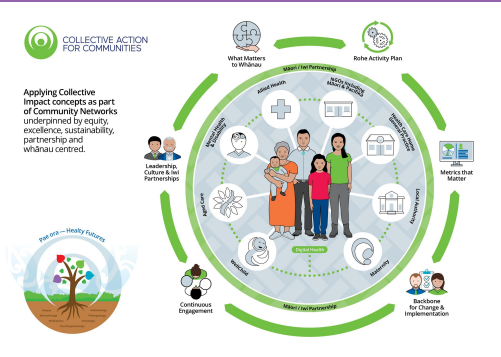
Reimagining the future...

Check out this video of Karōria Johns and Amarjit Maxwell talking about localities / rohe mahi. With equity and lived experience at the forefront, localities aims to improve health and wellbeing of whānau and community

[Amarjit & Claudia Localities - YouTube](#)

Collective Action with Communities - Hapori Ohu Ngatahi

We are about to release our first suite of Rohe/Locality resources. This comprehensive pack of information will guide you through the steps of Collective Impact and how it has been adapted for Aotearoa.



Website - upgrade

Watch this space for the launch of our newly refreshed website...the resource library and interactive model of care is more user friendly

The website also reflects our new focus of Collaborative Aotearoa

Aroha atu aroha mai

Amarjit To
Kanita Jess
Kirsten